

# OTAHUHU INTERMEDIATE SCHOOL

Te Kura Takawaenga o Ōtāhuhu

WEDNESDAY 10<sup>th</sup> APRIL 2024



**Students crossing at the pedestrian crossing under the supervision of our Road Patrol leaders.**

*Our school newsletter - communicating with our school community*

22-24 Luke Street, Ōtāhuhu, Auckland 1062

09 2766421



Otago  
Intermediate  
School

@Ōtāhuhuintermiddleschool

www.Ōtāhuhuint.school.nz

# NEWSLETTER 10/04/2024

## THIS IS THE NEWSLETTER OF:

NAME: \_\_\_\_\_

ROOM: \_\_\_\_\_

*Greetings, Kia Ora, Fakaalofa Lahi Atu, Bula Vinaka, Malo e lelei, Talofa Lava,  
Taloha, Kia Orana, Ni Hao, Buenos Dias, Chao, Malo Ni, Habari Dobar Dan,  
Namaste, Salam, Mauri*

## OUR SCHOOL VALUES

*Respect, Personal Responsibility, Passion*

## OUR SCHOOL VISION

EXCELLENCE FOR ALL

## OUR SCHOOL PEPEHA

Ko Tainui te waka

Ko Hoturoa te tangata

Ko Waikato te iwi

Ko Te Manukanuka o Hoturoa te moana

Ko Te Kura Takawaenga o Ōtāhuhu te kura

Ko Te Huarahi o Nga Waka te whare

Tihei mauri ora

# FROM THE ASSOCIATE PRINCIPAL



Kia ora, my name is Verna Ernstzen, and I am one of the Associate Principals here at Otahuhu Intermediate. I oversee the learning areas in our curriculum. I am the lead teacher for Reading, creating the overview to be followed by teachers. I provide feedback to the teachers' planning and assist with the pedagogy of delivering lessons in the class. My role involves working with the assessment of learning, examining the data and reporting this to the Board so that we can see our strengths and the areas needing improvement. I oversee the new staff members as they become accustomed to the teaching expectations at our school. It is a privilege to also be the Syndicate Leader for the exciting Rimu.

This is the second newsletter for the year. Our newsletters will be available twice per term. This is one of the many ways that we communicate and keep in contact with you. Please, check out our school website and our Facebook page too.

We have seen a very busy but exciting second half of Term 1. The upgrading of the playground with new picnic benches for students to sit around during break times has proved to be a hit with everyone. It is also great to see an increase in the number of students who cycle to school and lock their bicycles at the bicycle stand.

Our school values are a constant focus. Students receive special certificates during school assembly which acknowledges their great efforts at displaying the values and for upholding our school vision of 'Excellence for All'. Congratulations to the many recipients of these certificates.

The seven-day timetable allows us to cover the important Literacy, Math and Inquiry lessons but we are also able to include Singing assembly, Cultural groups and Tabloid sports. Students' health and fitness is also important thus, we continue to do Kori Tinana (Fitness) nearly every morning. This means that students must have their PE uniform with them every day. However, students must wear their school uniform to and from school every day. PE uniform is for PE times.

# FROM THE ASSOCIATE PRINCIPAL

Reading is important in forming the foundation to students' learning and understanding. We are currently following a Reading Challenge where teachers read to their classes for 15 minutes every day. Students are expected to read during SSR time; however, they are also expected to take a reader home and continue with their personal reading for at least 20 minutes. We would encourage families to take an interest in what is being read.

The timetable offers a period for a Singing Assembly, led by the teachers, but students can assist with the choices of songs to be sung at the assemblies. It is a chance to have lots of fun and movement. Everyone loves it!

Every student belongs to a cultural group where they are learning about the culture, songs and dance movements. The five cultural groups are: Kapa Haka, Tongan, Samoan, Indian, and the Cook Island – Niue groups. The groups are run by teachers but there are opportunities for students to play a leadership role.

Tabloid sports allows the students to use their physical skills, which they learn during PE time. The whole school is divided into many teams where they compete in various games against one another.

OIS has had an improvement in schoolwide attendance. We would hope that everyone realises that attendance is important to successful learning. We have had some days where the attendance was 94%. This is encouraging; however, it is vital that we maintain this standard. Our next steps are to focus on improving the punctuality of students.

Please remember that we have an 'Open Door Policy' where you can come in to discuss any issues that your child is experiencing. We can only deal with issues if we are made aware of what is happening. We would remind parents that they must be aware of which social media platforms their child is always using.

Finally, we had our class photos taken by *PhotoLife*. You will be able to order a class photo online. We hope you will purchase a class photo and build the memories of school.

We look forward to seeing you around the school, and hope that you enjoy being part of the OIS whanau.

Nga mihi

Verna Ernstzen

Associate Principal

Otahuhu Intermediate School





# ATTENDANCE AT SCHOOL

We love having your children here at school! They bring a happy smile and energy! Whilst we know that some days we have appointments, family events and celebrations, we feel sad when students miss out on school unnecessarily, so we wanted to share these facts with you:

If your child misses:	That equals:	Which is:	And over 13 years of schooling, that is:
1 day every 2 weeks	20 days per year	4 weeks per year	Nearly 1.5 years
1 day per week	40 days per year	8 weeks per year	Over 2.5 years
2 days per week	80 days per year	16 weeks per year	Over 5 years
3 days per week	120 days per year	24 weeks per year	Nearly 8 years

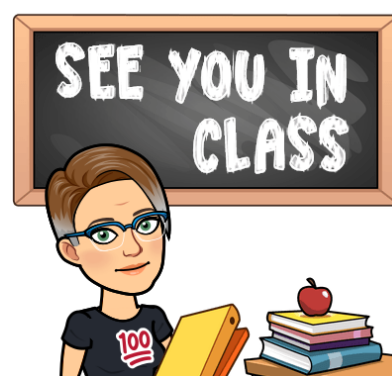
*“How about 10 minutes late a day? Surely that won’t affect my child...”*

If your child misses:	That equals:	Which is:	And over 13 years of schooling, that is:
10 mins per day	50 mins per week	Nearly 1.5 weeks per year	Nearly half a year
20 mins per day	1 hr 40 mins per week	Over 2.5 weeks per year	Nearly 1 year
30 mins per day	Half a day per week	4 weeks per year	Nearly 1.5 years
1 hour per day	1 day per week	8 weeks per year	Over 2.5 years

Not only does lateness affect a child’s education, but it also has an impact on our office staff, who need to meet with these students and adjust the morning register. This takes them away from completing other important tasks that benefit our students.

Instruction starts at **8:45am** each day. But classes are open at **8.30am** each day. All students must arrive at school before then to prepare for the day.

Please do your absolute best to ensure your child arrives at school on time. Get in touch with us if you have special circumstances, so we are aware of what is happening for your whānau.



# TERM 2 2024 CALENDAR

Please note that there maybe some new events that need to happen at late notice due to unforeseen circumstances. However, we will do our best to update the term calendar regularly.

WEEK	DATE	EVENT
1	Monday 29 <sup>th</sup> April	Start of Term 2
	Mon 29 <sup>th</sup> April – 3 May	Dental van at OIS
2		
3	Monday 13 <sup>th</sup> May	Immunisation Day for Y8: HPV dose 1
	Mon 13 <sup>th</sup> May-Fri 17 <sup>th</sup> May	Dental van at OIS
4	Monday 20 <sup>th</sup> -24 <sup>th</sup> May	Financial Literacy: Getwise
5	Friday 31 <sup>st</sup> May	Staff Only Day (Otahuhu Kahui ako) No school for the students)
6	Monday 3 <sup>rd</sup> June	King's Birthday - Public Holiday
7		
8		
9	Friday 28 <sup>th</sup> June	Matariki – Public Holiday No school for the students
10	Friday 5 <sup>th</sup> July	End of term 2

# Teaching and Learning Focus for Term 2

**Values:** Personal Responsibility through the Topic of Inspirational Leaders and Service

**Reading:** Non-fiction texts, articles, adverts, visual reading posters, Poetry

**Writing:** Exposition/ Transactional writing: Persuasive writing, Letter writing (formal and Friendly), emotive and persuasive language, simple and compound sentences; Poetry, Idioms and Proverbs.

**Mathematics:**

**Number skills:** Fractions. Percentage, Decimals, Multiplication, division, word problems

**Strand:** Statistics (types of graphs)

**Inquiry: Social Science:**

Topic: Inspirational people and Service– local and global.

How do they affect me and what can I do that affects others positively?

**Specialists/ Technology:**

**Visual Art:** India Ink

**Health:** Emotional Resilience and Te Whare Tapawha

**Semi-Specialisation:**

Te Reo

Sign Language

Careers

Geography

# STAFF CHANGES

**Miss Phoebe  
TEACHER AIDE  
WELCOME**

My name is Phoebe Sala. I am a proud NZ-born Samoan. I enjoy listening to music, taking care of our church youth group. I am looking forward to building interpersonal relationships with the students here at OIS, and to bring my passion and faith to use as my strength, to not only serve but nurture our students to be the best. I will be assisting with the students who are *English Speakers of Other Languages* (ESOL)



**Miss Sarah Buckwell  
TEACHER AIDE  
FAREWELL**

My name is Sarah and I have been a Teacher Aide here at OIS since 2022. In my time here I have been a part of Kauri and Rimu Syndicates. I have enjoyed helping students with their learning as well as with band, and filming and editing videos for classes. Sadly, I am leaving OIS at the end of Term 1 to move to the United States of America. A big thank you to everyone at OIS, you have made my time here memorable.





# SYNDICATE SPIRIT DAY



We had our first Syndicate Spirit Day for 2024! It was an **AWESOME** day!! Students participated in heaps of different activities run by Counties Manukau Sport. A huge shout out to the staff for their mahi and to CM Sport for making sure our day rocked! It was great to see so many of our students dressed up and representing their syndicate with passion! We can't wait for our next Syndicate Spirit Day!





# SYNDICATE SPIRIT DAY

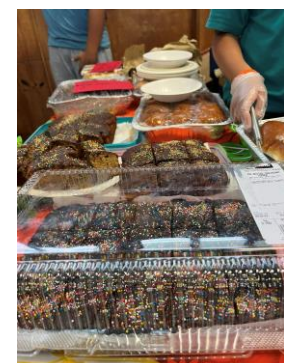
The whole day was dedicated to active sport pursuits. Students rotated through stations set up for padder tennis, netball, football, basketball, touch rugby, cricket, volleyball, hockey, "fun station", badminton, "Capture the Flag", and dodgeball. Groups were mixed from the three syndicates of Rimu, Kowhai and Kauri. The sun was out in full force and the full schedule made for a very busy day which was enjoyed by all.





# Night Markets

**Thank You for your Support.** On Friday, 15<sup>th</sup> March, Otahuhu Intermediate had its first Night Market. This was well supported by students, whanau and the wider community. Each class had their own stall where a wide variety of food was on offer. It was a good opportunity for the students to showcase their hard work and passion in preparing their class stall. Students developed entrepreneurial skills where they discussed and worked out how best to market and sell their goods. Throughout the week, all classes continued with their regular learning programmes but managed to fit in some time to plan and organise goods for their own class stall. Every stall was colourful and unique, decorated by the students. They sold their goods with pride! Our school values were clearly on display where you could see the respect for our school by the huge support; personal responsibility, where so many students and families made huge contributions to the classes; and passion, where the students persevered in selling all their goods, competing with the other stalls. The teachers worked very hard at communicating and organising with the families who donated and made delicious food to sell. They were able to meet and build connections and relationships with whanau. Thank you. It was very humbling to see the great support from everyone.





# Night Markets





# Fanau Fakataha-Fono

We had our first Fakataha/Talanoa for our two Bilingual Enrichment classes Kalasi Tonga and Fasenga Samoa. This was an opportunity for our students' families to talk about what they want to see in these classes and to hear about what is already happening in these spaces. There was an excellent turn out of family and the evening was superbly run by Mrs Liu and Mrs Tariu. Mālo aupito and Fa'afetai lava everyone!





# Lunchtime Activities

Our students are very fortunate to have a variety of activities to participate in during lunchtime. Miss Oliver provides hands-on craft activities where students can learn about the Maori traditions of weaving using harakeke.



## Visual Art Lunchtime Textile Activity

Students are now doing tie-dye during break times in the art room with Mr T.



Students can just hang out on our new picnic benches.





# ACTIVITIES AROUND SCHOOL

Students receiving their certificates at school assembly for displaying behaviour which reflects our school values.



All students participate in a cultural group: Kapa Haka, Tongan, Samoan, Indian, Cook Island/ Niue. Here we have the Samoan and Cook Island/ Niue groups.



Staff running a Reading programme called RT3T. The students learn to be the 'teacher' in the group. Each member has a special task and role. This is Room 5.





# ACTIVITES AROUND SCHOOL

We have embarked on a 21day Read Aloud Challenge to create a reading habit. SSR is part of the daily timetable. Students must be reading at home too.



Kori Tinana (Fitness) continues every morning for 20 minutes. There are 3 rotations: Just Dance, skipping, running and exercises. The body AND minds get a great workout!



Tablet sports allows students to use their skills which they learn in PE





# Project Wy

**Project Wy** season is here! Congratulations to the student leaders who were selected to be apart of the 2024 Project Wy Leadership Programme. The purpose of this programme is all focused around whanau and building strong relationships between the parents, child, school and community all while having fun. Will take part in the Rotorua 10km Marathon and Tough Guy Tough Girl Challenge. Beside relationship building, another positive result will be an improvement to everyone's physical fitness. We wish you well for the early morning training and fun.

A Parent Info presentation was held on 21st March at 5.30pm in our hall. There was a full house last night, with a whopping 37 families in attendance.

A huge thank you to the Project Wy Team for coming in, to OIS to promote the awesome mahi they do with our kids.

The first morning of **Project Wy** was a success! A massive turnout of students and a significant adult in their life. Thank you to the OIS staff for your energy and commitment towards this great initiative.





# Sports teams

Students trialled and trained to represent our school against other Intermediates in softball and tag. The students have shown the school values of passion, personal responsibility and respect throughout the tough training sessions during intervals as well as after school. A huge thanks to the staff for their time to train the students.



The team of girls from year 7 and 8 that represented OIS at the South-West Zone Interschool **Softball competition** were outstanding. We placed 3<sup>rd</sup> overall, having made it to the semi-finals. Our girls were outstanding on the outfield, on target pitchers, as well as far hitting batters. They have done our school proud in all their training and game efforts. Well done to our incredible team: Lofa (captain), Brooklynn (vice-captain), Angell, Sia, Charlotte, Tonga, Elisa, Amanda, Chanlika, Chyrelle, Zara Lee, Sapphira, Ghianna, Gabby, and Kalita.





# Sports Activities

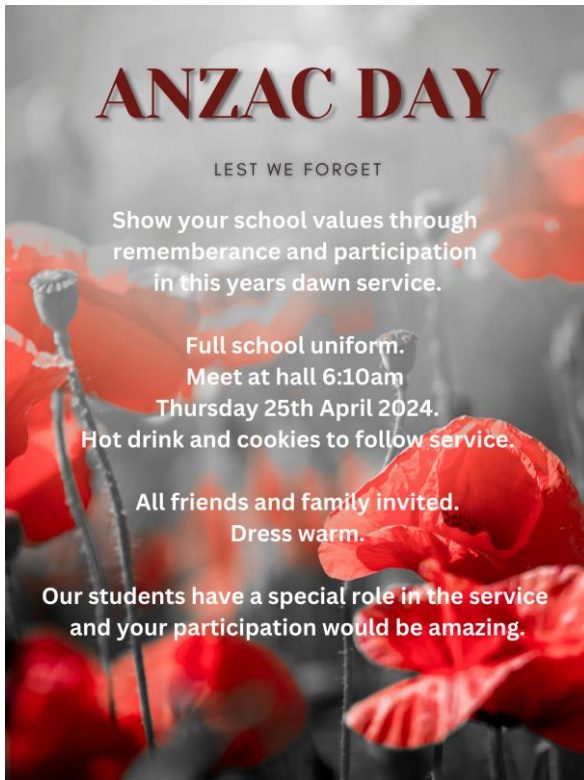
Our girls and boys Tag Teams played the annual SWZ Tag Tournament at Ngati Otara Park . The skills on show were outstanding. Our girls played exceptionally well all day under the leadership of their Captain Elisa Pasene R9.





# IMPORTANT NOTICE

## ANZAC DAY DAWN SERVICE



Here is an opportunity for us to show RESPECT. We pay tribute and thanks to all those who have gone to war and who have died in battle in order to uphold the community value of Democracy. Join the rest of New Zealand and Australia in this memorial ceremony. OIS has participated in the Dawn Service for many years. Bring your families along too. Thank you to miss Oliver for organising the opportunity for our school to be represented.



### Previous Project Wy events



- Rotorua 10km run
- Mud Run
- Science Stem July holidays at the University of Auckland
- Rangitoto walk



**PROJECT WY FUNDRAISER**  
**ICE CREAM SALE!**

Special price \$2

Special price \$2

Special price \$4

**FRI 5TH APRIL**  
**WED 10TH APRIL**

# COMMUNITY NOTICE



## McAuley High School 2025 Enrolment

Enrolments are now open for Year 9 students in 2025.

The closing date for non-preference students is 12 April 2024, the end of Term 1.

The closing date for preference students is 27 September 2024, the end of Term 3.

Enrolment packs can be collected from the school office, downloaded from our website or you can phone the office to have one posted out to you.

Donna Buchanan is organising Gently Loved Markets Teens on Saturday 4<sup>th</sup> of May at the [Western Springs Garden Community Hall](#) from 10am to 1pm.

GLM Teens offers a sustainable market day for 8 - 16 year olds, featuring second hand, and upcycled clothing, accessories, plants, baking and more! Proudly part of and supported by the Albert-Eden & Puketāpapa Eco Festival. Further information can be found on the Facebook event page here - <https://fb.me/e/v81Pvbkw>

The poster for 'Gently Loved Markets teens' features a purple-to-blue gradient background. It is decorated with various white icons including a star, lightning bolt, smiley face, cloud, hanger, star, leaf, lips, sunglasses, donut, camera, headphones, and a flower. The text reads: 'Gently Loved Markets teens' in a mix of fonts, 'SATURDAY 4TH MAY 10AM TO 1PM' in bold, 'Western Springs Garden Community Hall 956 Great North Road, Western Springs Free Entry', 'Preloved &amp; Upcycled Clothing, Accessories &amp; More', and 'Proudly supported by The Albert-Eden and Puketāpapa Eco Festival.' at the bottom.



# IMPORTANT NOTICE

## OTAHUHU INTERMEDIATE SCHOOL

Students may bring their mobile phones to school, but **MUST** hand them in at the start of the day to the Office Manager's office ensuring their name and room number is on the paper provided. Students must also ensure they collect their mobile phones at the end of the school day from the same place.

Students who have their mobile phones on then during school hours will have to do beautification duties around the school, their phone will also be confiscated and it will need to be collected by a parent or caregiver.

*We take no responsibility for stolen or lost mobile phones if students do not follow the rules.*

## STUDENT'S MOBILE PHONE POLICY



You maybe aware that the The Government has introduced regulations that require all state schools and kura to have student phone rules in use. Rules must be in use as soon as possible in Term 1 2024 and no later than Term 2. Please read our Student's Mobile Phone Policy.

If you have any feedback you would like to provide on this policy please email us at

[office@otahuhuint.school.nz](mailto:office@otahuhuint.school.nz)

Please provide your feedback before March 7<sup>th</sup>.



# IMPORTANT NOTICE



Otahuhu  
**Intermediate**  
School

## *Breakfast Club*

**IN THE SCHOOL HALL**

**COME AND HAVE SOME KAI  
TO SET YOU UP FOR THE  
DAY!**

---

**EVERY MORNING FROM 7.45AM - 8.25 AM**



# IMPORTANT NOTICE

## Ka Ora, Ka Ako Healthy School Lunches Programme



Te Tāhuhu o  
te Mātauranga  
Ministry of Education



The Ka Ora, Ka Ako | Healthy School Lunches programme aims to reduce food insecurity by providing access to a nutritious lunch in school every day. Around a million lunches are provided each week.

**Otahuhu Intermediate** is part of the healthy school lunches programme. Meaning that your child will receive free lunch when attending our Kura this year.



# IMPORTANT NOTICE



Otago  
**Intermediate**  
School



**01**

## **YOUR FIRST ONE**

Is free! so please look after it. It is part of our school uniform so you have to wear it.

## **SYNDICATE BANDS**

---

---

**02**

## **YOUR NEXT ONE**

If it breaks or you lose it then you can buy one for \$2.00

**03**

## **WHERE AND WHEN CAN YOU BUY IT?**

You can buy your band from the window next to the tuck shop every morning between 8.15AM and 8.40AM





# IMPORTANT NOTICE

**Please do not come up the school driveway at the end of the school day to collect your child. It is dangerous to have so many cars driving on the driveway while our students AND staff are trying to make their way to the front entrance.**

**Also, can I please remind you that it is illegal to park on any yellow lines and across driveways. Once again this is incredibly dangerous and illegal.**

**Our students and staff safety is paramount. The staff and students of Ōtāhuhu Intermediate thank you for your co-operation with this.**

**KEEP OUR  
KIDS  
SAFE**



## FOR YOUR CHILD'S SAFETY

PLEASE DO NOT CALL YOUR CHILD ACROSS THE ROAD AT THE END OF THE DAY. WE EXPECT OUR STUDENTS TO USE THE PEDESTRIAN CROSSING FOR THEIR OWN SAFETY!

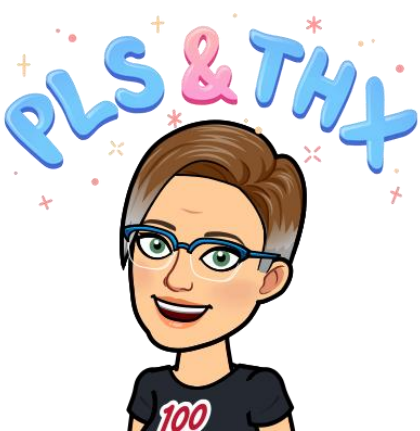
IF WE ARE OUT ON THE FRONT GATE AND WE REMIND YOUR CHILD TO USE THE PEDESTRIAN CROSSING INSTEAD OF RUNNING ACROSS THE ROAD TO GET TO YOU, PLEASE DON'T BE OFFENDED. WE ARE LOOKING AFTER YOUR CHILD'S SAFETY AND WELL-BEING!



## YOUR CHILD NEEDS TO STAY AT SCHOOL ALL DAY!

STUDENTS ARE EXPECTED TO STAY AT SCHOOL THE ENTIRE SCHOOL DAY.

PLEASE DON'T BE OFFENDED IF WE ASK THE REASON WHY YOU WANT TO HAVE YOUR CHILD RELEASED EARLY. COMING TO GET THEM BEFORE THE END OF THE DAY IMPACTS NEGATIVELY ON YOUR CHILD'S LEARNING.







Otahuhu  
**Intermediate**  
School

## PLEASE CHECKOUT OUR FACEBOOK PAGE!

‘Ōtāhuhu Intermediate School’



Please **LIKE** us so you get to see all the awesome things we are doing at our school. Our Facebook page is also a great way for us to keep you updated with important information.



# GENERAL SCHOOL NOTICES & REMINDERS

## PLEASE NAME IT

We make every effort to see students' personal items are secure. It would make our task considerably easier and would drastically reduce levels of stress for students if ALL ITEMS – INCLUDING ALL UNIFORM ITEMS, PE UNIFORMS, SHOES, SPORTS EQUIPMENT, JACKETS, JERSEYS, LUNCHBOXES, WATER BOTTLES, BAGS etc. WERE ALL CLEARLY NAMED!!

## SMOKE AND VAPE FREE ENVIRONMENT

In accordance with legislation I remind parents/caregivers and students that our entire school and boundary is Smoke and Vape Free.

## OPEN DOOR POLICY

Ōtāhuhu Intermediate has an "Open Door Policy". This means that should you have any questions or concerns about anything please do not hesitate to contact us. Don't be a stranger, but pop in anytime you can. We'd love to see you!

If at any time you wish to see any of your child's teachers about something specific please telephone the school to organise an appointment. At times there are bound to be issues that crop up and we encourage you to air your concerns but ask that you speak to the person involved first. If you have done this and feel there has been no success, you are more than welcome to see the Syndicate Leader, the relevant senior staff member or myself.

If you are wanting information on your child's progress, it is advisable to book a time to see the class teacher. This will enable the teacher to give you the time you deserve to have the proper conversation. Classrooms are busy places in the mornings before school and immediately after, and it is not always possible for the teacher to give full attention to your queries if you do not book in advance.

## MESSAGES FOR/FROM STUDENTS

We accept there will be occasions when students need to contact members of their family during the school day. With the approval of their classroom teacher, students are able to use a school telephone to do this. Because of the demands of school management and school activities, these calls will be restricted to important matters – not to have forgotten homework, lunch etc. dropped off or to arrange an after school social occasion! If things are forgotten then children will need to learn to accept the consequences for their actions. Likewise, the school accepts with today's busy schedules there will be occasions when parents need to get important messages to their children.

The school will make every effort to forward these messages, if received before 2.30pm. However, the administration staff cannot accept responsibility if a student does not receive a message.

## ABSENCE

If your child is absent from school please call the office on 276 6421 or online to our School Website -Ōtāhuhu Intermediate School, to report an absence before 8.30am.

## UPDATE OF INFORMATION

If there have been any changes to the custodial arrangements, change of address, change of telephone number, change of emergency contact numbers, or any other changes we would be very grateful if you would inform us as soon as possible, so our records can be corrected.

## OUR SCHOOL VALUES

Respect, Personal Responsibility, Passion.

## LATENESS

All students who are late (i.e. arriving at school after the 8.45am bell) report to the office before heading to class. This is to ensure we keep a track of attendance and student safety. We appreciate your support with this!

## MONEY

Money is not to be left in bags, desks or clothing when not being worn. Hand to the office or class teacher for safe keeping. If the procedure is not followed and money is 'lost' or 'stolen' we will not waste any time following up. Owner beware - follow the procedure!

## NO!!

iPod, game, fizzy drinks, lollies, chocolate or chewing gum are to be brought to school. If a student has any of these, they will be confiscated and returned at the end of the day! We look forward to your support with this. AND lunches are provided free to every child so no need to do drop offs.

## MOBILE PHONES

If students bring cellphones to school they are left at the office before school and collected after school. If students keep them on them or in bags during the day and they are 'lost' or 'stolen' we will not waste any time in following up. Owner beware - follow the procedures!

## MEDICATION IN SCHOOL

No medication should be kept in your child's school bag. If your child has antibiotic/medication that needs to be administered during the school day please ensure you have handed it in at the office. No medication can be administered to your child without approval.

## VISITORS

Whenever you visit the school please do so via the office so you can be checked in, instead of going directly to the classroom. Thank you for your cooperation.



### SCHOOL PROPERTY

The school has a policy of “abuser pays”. Students who carelessly or wilfully damage school property or equipment will be asked to meet the cost of the repairs, or at the very least pay a fair share of the replacement. We hope this will become a rare occasion at Ōtāhuhu Intermediate, however when this does occur, parents/caregivers will receive an explanatory letter and a tax invoice to cover costs. In addition to the fact that schools operate on very tight budgets, we see the development of personal responsibility as an important outcome of our school programmes.

### INTERNET SAFETY

We are well aware that the internet is a wonderful educational resource, but we all know there are dangers. As you know, to use the information and communications technologies resources, including accessing the internet at school, students and their parents are required to sign an ACCEPTABLE USE OF INFORMATION AND COMMUNICATIONS TECHNOLOGIES AGREEMENT. This agreement spells out very clearly what is acceptable and what is not acceptable both in terms of use and internet site access. This is done at enrolment. Students use individual logons and our system records for audit all logons, the date and time of the logon, the location of the computer and a list of all searches attempted and sites accessed. Please discuss with your child the appropriate use of the internet. Teachers also do this on a regular basis.

### DRINK BOTTLES

Students are encouraged to carry water bottles with them in class. A common sense approach and one we will remind all children throughout the term! Your support with this is much appreciated in the form of naming drink bottles and providing them! We encourage all children to drink water regularly throughout the school day.

### SCHOOL HOURS

Students are expected to be in school before 8.30am, ready for an 8.45am start. The school day ends at 3.00pm. All students leave school at the end of the day. The Leadership Team are at the front gate every afternoon to ensure the students safely leave the school grounds.

### STUDENT AND whānau SUPPORT

We are very lucky to have the services of our very own SWiS and Counsellors. Their roles are incredibly important and are here to support students and whānau (to some degree). Please see the office if you need any information on this.

### PARK SAFELY AND KEEP OUR KIDS SAFE

Drivers who stop in the wrong place to drop off and pick up passengers put the safety of children at risk. Please do not park on the yellow lines outside the school.

Please park legally to keep our children safe and to avoid being ticketed. Before and after school is a busy time for everyone. Parking rules help protect our children and keep them safe. Drivers who park illegally put our kids at risk.

Please **do not** call your child to cross the road before or after school to where you are parked. There is a pedestrian crossing on Luke Street outside the school. Encourage your child to use the pedestrian crossing!

Please also be mindful of your speed, other vehicles and the students if you are using the school driveway to drop off and pick up your child(ren).

### HOME STUDY/HOMEWORK

Our stand on home study is that it is useful and helps develop good work habits but can also be a contentious and emotional issue, that can cause much conflict in the home and at school. There is always a wide range of views on the subject with some parents wanting more and others wanting less.

We believe that home study at this level gives students practice at managing their time to do some self-directed learning and therefore, encourage the importance of reading. Reading is crucial in all areas of life. Our children need to learn to read for sustained periods (at least 15 minutes at a time) – so if your child says “I don’t have any homework” hand him/her a good book!



# OTAHUHU INTERMEDIATE - EXCELLENCE FOR ALL

# OTAHUHU INTERMEDIATE SCHOOL

Te Kura Takawaenga o Ōtāhuhu

WEDNESDAY 10 APRIL

**Have a go at these Brain teasers.**

1. What can be broken but never held?
2. What word is spelled incorrectly in every single dictionary?
3. What is it that lives if it is fed, and dies if you give it a drink
4. What never asks a question but gets answered all the time?
5. What word would you use to describe a man who does not have all his fingers on one hand?
6. What goes up but never ever comes down?
7. What can one catch that is not thrown?
8. If you have one, you want to share it. But once you share it, you do not have it. What is it?
9. What starts with “e” and ends with “e” but only has one letter in it?

✂.....

I have received and read Newsletter 10/04/2024

SIGNED: \_\_\_\_\_ Parent of \_\_\_\_\_ Room: \_\_\_\_\_

Whānau, please circle which syndicate your child is in and return this to your child’s teacher for your child to be in the draw for a \$10 Tuck Shop voucher.

**KOWHAI**

**KAURI**

**RIMU**